

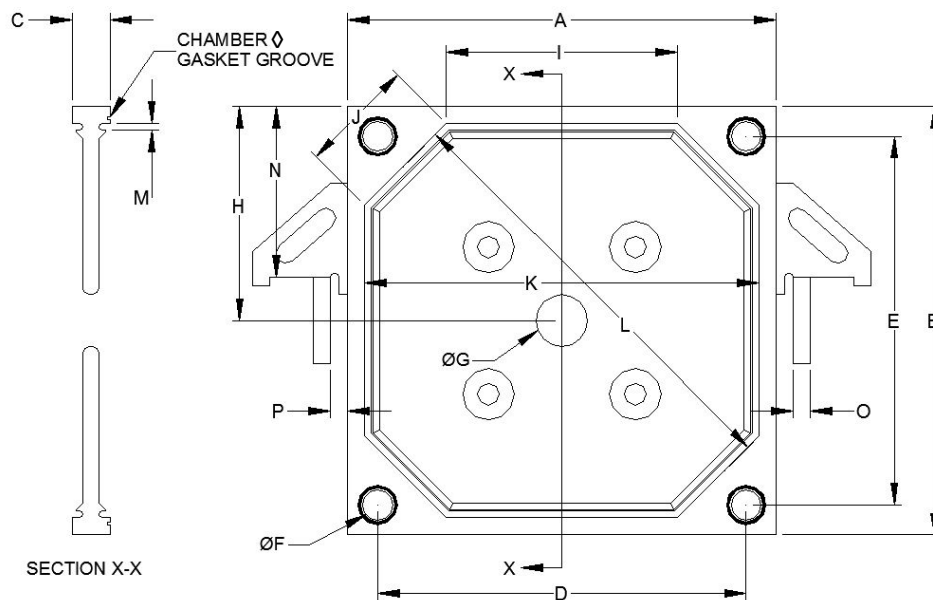


M.W. WATERMARK, L.L.C

4660 136th Avenue, Holland, MI 49424
www.mwwatermark.com

Office 616.399.8850
 Fax 616.399.8860

CGR FILTER PLATE QUESTIONNAIRE



| Dim | Description | Metric (mm) | Imperial (inch) |
|-----|---|-------------|-----------------|
| A | Plate Width | | |
| B | Plate Height | | |
| C | Plate Thickness | | |
| D | Corner Hole Horizontal Center to Center Distance | | |
| E | Corner Hole Vertical Center to Center Distance | | |
| F | Corner Hole Inside Diameter | | |
| G | Feed Hole Diameter Select One: <input type="checkbox"/> Corner <input type="checkbox"/> Center | | |
| H | Feed Hole Distance to Top of Plate | | |
| I | Cloth Groove Horizontal Segment Outside Edge to Outside Edge Distance | | |
| J | Cloth Groove Diagonal Segment Outside Edge to Outside Edge Distance | | |
| K | Cloth Groove Outside Edge to Outside Edge Distance | | |
| L | Diagonal Cloth Groove Outside Edge to Outside Edge Distance | | |
| M | Cloth Groove Width | | |
| N | Handle Distance to Top of Plate | | |
| O | Side Rail Thickness | | |
| P | Side Rail Clearance | | |

Please enter contact information below:

| | |
|----------------------------|--|
| Company: | |
| Contact Name: | |
| Telephone: | |
| Email: | |
| Address: | |
| City / State / ZIP: | |

Enter filter press information below:

| | | |
|----------|-------------------------|--|
| T | Press Make: | |
| U | Feed Pressure: | |
| V | Cake Thickness: | |
| W | Gasketing†: | |
| X | Porting†: | |
| Z | Fluid Temp (°F): | |

‡ Filter plate gasketing is either same-side or opposite-side. Same-side gasketing has the chamber gasketing on the same side as the corner hole o-rings. Opposite-side gasketing has the chamber gasket on the opposite side of the plate from the corner hole o-rings.

† Filter plate porting as viewed from the manifold end of the filter press. Normally indicated by either a 1-button or 3-button marking on the side of the plate.

◊ Opposite-side gasketing shown.